



GMT MONTHLY MEMBERSHIP PROGRESS REPORT

Results as of: 5/31/2026

Multiple District 43

LOCATION: KENTUCKY

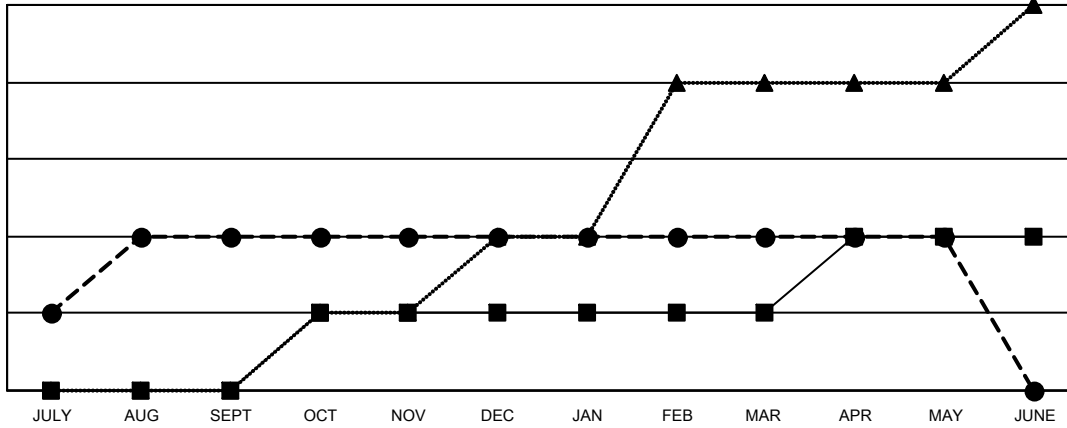
GMT: OPEN

GMT CA 1

Clubs			
RESULTS FOR 2025-2026			
QUARTER	NEW CLUB GOAL	NEW CLUBS	DROPPED CLUBS
JULY/AUG/SEPT	0	2	2
OCT/NOV/DEC	1	0	1
JAN/FEB/MAR	0	0	0
APR/MAY/JUNE	1	0	0

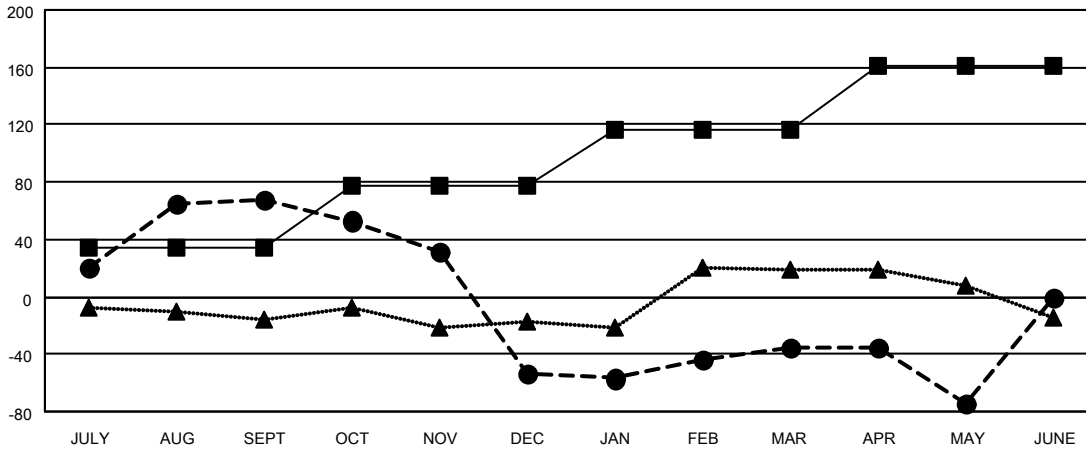
Members			
RESULTS FOR 2025-2026			
QUARTER	MEMBER GROWTH NET GOAL	MEMBER GROWTH ACTUAL	DROPPED MEMBERS ACTUAL (including transfers)
JULY/AUG/SEPT	34	175	99
OCT/NOV/DEC	44	74	185
JAN/FEB/MAR	39	107	81
APR/MAY/JUNE	44	57	87

GOALS AND ACTUAL NEW CLUBS CUMULATIVE



- - CURRENT YEAR GOALS FOR NEW CLUBS
- - CURRENT YEAR ACTUAL NEW CLUBS
- ▲ - LAST YEAR ACTUAL NEW CLUBS

GOALS AND ACTUAL MEMBERS CUMULATIVE



- - MEMBER GROWTH NET GOAL
- - MEMBER GROWTH ACTUAL
- ▲ - LAST YEAR MEMBERSHIP ACTUAL

DROPPED CLUBS: 3	83 CLUBS OF 146 ADDED 1 OR MORE NEW MEMBERS	GENDER DISTRIBUTION
		MALE 2,252 (61.65%)
		FEMALE 1,401 (38.35%)
DROPPED MEMBERS	CLICK HERE FOR CUMULATIVE MEMBERSHIP DATA	TOTAL FAMILY UNIT MEMBERS 723
DECEASED 52		FAMILY MEMBERS PAYING HALF DUES 373
CLUB CANCELLED 7		
OTHER 391		
TOTAL 450		